

2-Digit Addition

Regrouping: 51

$$\begin{array}{r} 1) \quad 68 \\ + 95 \\ \hline \end{array}$$

$$\begin{array}{r} 2) \quad 45 \\ + 86 \\ \hline \end{array}$$

$$\begin{array}{r} 3) \quad 73 \\ + 17 \\ \hline \end{array}$$

$$\begin{array}{r} 4) \quad 24 \\ + 39 \\ \hline \end{array}$$

$$\begin{array}{r} 5) \quad 84 \\ + 27 \\ \hline \end{array}$$

$$6) \quad 19$$

$$7) \quad 96$$

$$\begin{array}{r} 8) \quad 57 \\ + 64 \\ \hline \end{array}$$

$$\begin{array}{r} 9) \quad 36 \\ + 49 \\ \hline \end{array}$$

PREVIEW

Gain complete access to the largest collection of worksheets in all subjects!

Members, please log in to download this worksheet.

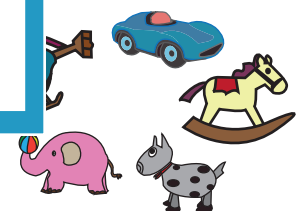
Not a member? Please sign up to gain complete access.

www.mathworksheets4kids.com

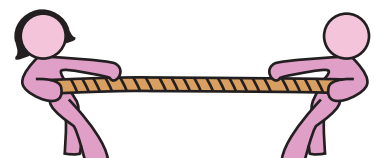
$$\begin{array}{r} 12) \quad 87 \\ + 71 \\ \hline \end{array}$$

- 13) Frank Toy
How many

ffed animals.



- 14) 48 girls and 36 boys participated in a tug of war. How many children have participated in the game?



Answer Key**2-Digit Addition**

Regrouping: 51

$$\begin{array}{r} 1) \quad 68 \\ + 95 \\ \hline 163 \end{array}$$

$$\begin{array}{r} 2) \quad 45 \\ + 86 \\ \hline 131 \end{array}$$

$$\begin{array}{r} 3) \quad 73 \\ + 17 \\ \hline 90 \end{array}$$

$$\begin{array}{r} 4) \quad 24 \\ + 39 \\ \hline 63 \end{array}$$

$$\begin{array}{r} 5) \quad 84 \\ + 27 \\ \hline 111 \end{array}$$

$$6) \quad 19$$

$$7) \quad 96$$

$$\begin{array}{r} 8) \quad 57 \\ + 64 \\ \hline 121 \end{array}$$

$$\begin{array}{r} 9) \quad 36 \\ + 49 \\ \hline 85 \end{array}$$

PREVIEW

Gain complete access to the largest collection of worksheets in all subjects!

Members, please log in to download this worksheet.

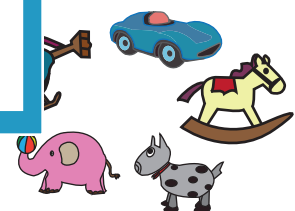
Not a member? Please sign up to gain complete access.

www.mathworksheets4kids.com

$$\begin{array}{r} 12) \quad 87 \\ + 71 \\ \hline 158 \end{array}$$

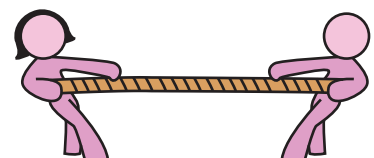
- 13) Frank Toy
How many

ffed animals.



103

- 14) 48 girls and 36 boys participated in a tug of war. How many children have participated in the game?



84