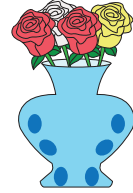


Name : _____

Fraction

T2S2

- 1) Mrs. Graham placed 6 red, 8 yellow, and 7 white roses in a vase. What fraction of roses are yellow?



- 2) A local community bank has 31 employees on its rolls. Fifteen employees work part-time at the bank and 16 employees work full-time. What fraction of employees work in the bank?

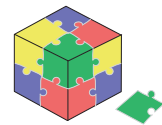


- 3) David was gifted a puzzle with 100 pieces. He has already put together 81 pieces. What fraction of the puzzle has he completed?

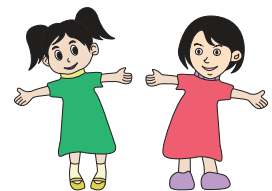
Gain complete access to the largest collection of worksheets in all subjects!

Members, please log in to download this worksheet.

Not a member? Please sign up to gain complete access.



- 4) Twenty girls were at a dance. Fifteen girls wore red outfits and five girls wore green outfits. What fraction of the girls wore red outfits at a dance?



- 5) A section of Tina's bookshelf has 15 French books and 6 Spanish books. What fraction of books on the shelf are in Spanish?

