

Facing Left & Facing Right

Observe each picture, and identify whether the animal is facing left or right. Check the appropriate option.

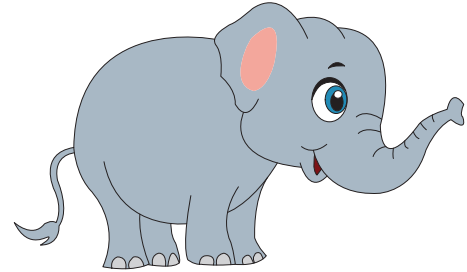
1)



left

right

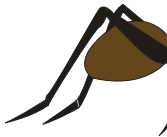
2)



left

right

3)



left

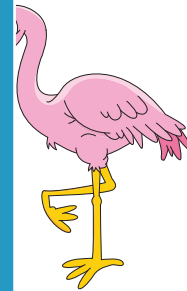
PREVIEW

Gain complete access to the largest collection of worksheets in all subjects!

Members, please log in to download this worksheet.

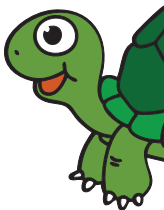
Not a member? Please sign up to gain complete access.

www.mathworksheets4kids.com

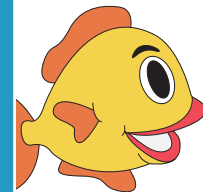


right

5)



left



right

7)



left

right

8)



left

right