

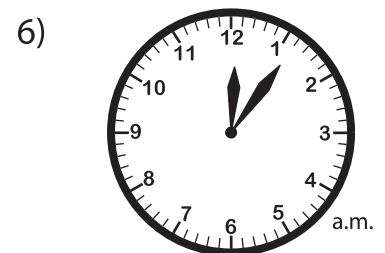
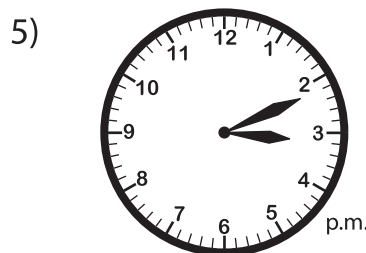
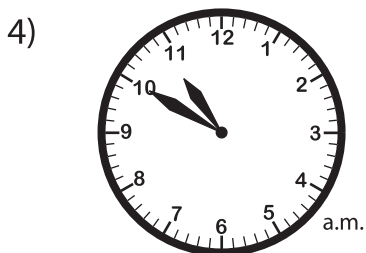
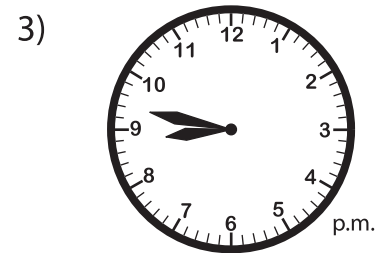
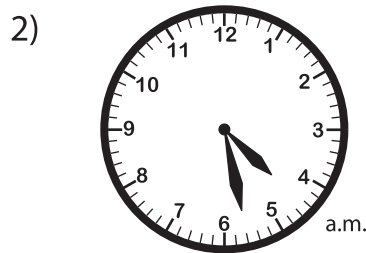
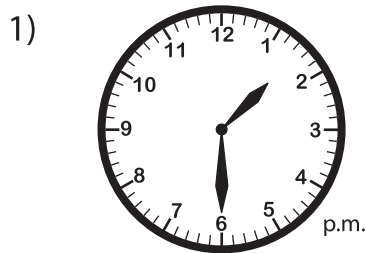
Name : _____

Converting from 12-Hour to 24-Hour Clocks

A) Convert each time from 12-hour to 24-hour clock.

- 1) 7:12 a.m. = _____ 2) 10:05 p.m. = _____
3) 2:43 p.m. = _____ 4) 5:31 a.m. = _____
5) 9:24 a.m. = _____ 6) 11:56 p.m. = _____
7) 6:39 p.m. = _____ 8) 3:00 a.m. = _____

B) Read each analog clock, and write the time in 24-hour format.



C) The flight to Dallas will depart at 03:45 pm. Express this time in a 24-hour clock format.
