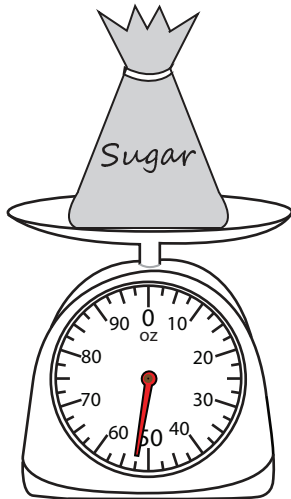


Measuring Weight - Customary Units

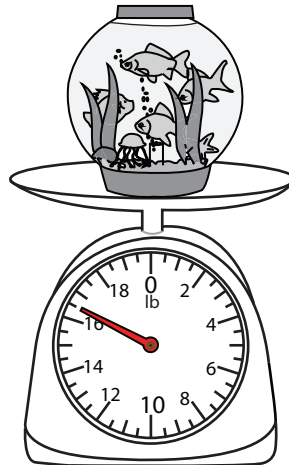
DS2

Measure the weight of each object.

1)

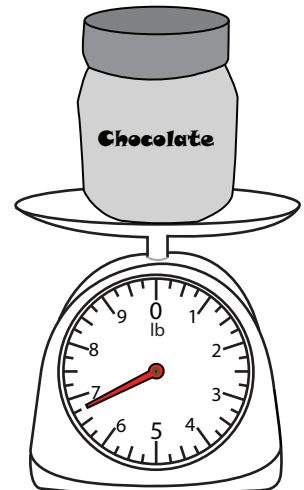


2)



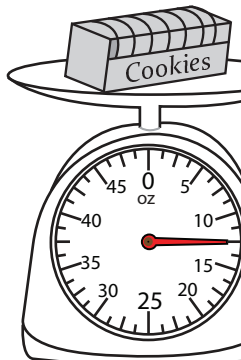
_____ lb

3)



_____ lb

4)



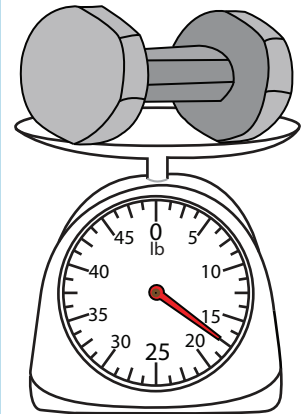
_____ oz

Gain complete access to the largest collection of worksheets in all subjects!

Members, please log in to download this worksheet.

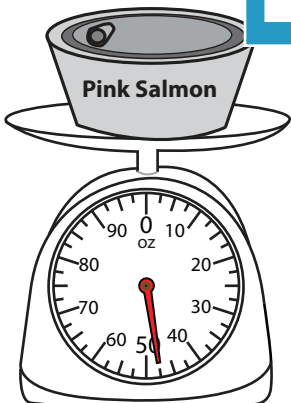
Not a member? Please sign up to gain complete access.

www.mathworksheets4kids.com

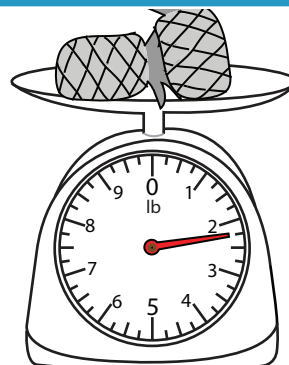


_____ lb

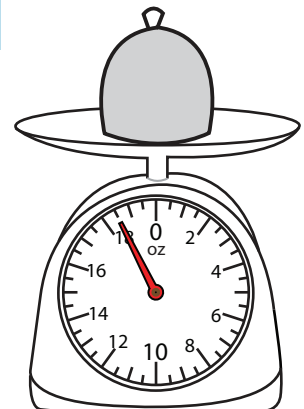
7)



_____ oz



_____ lb



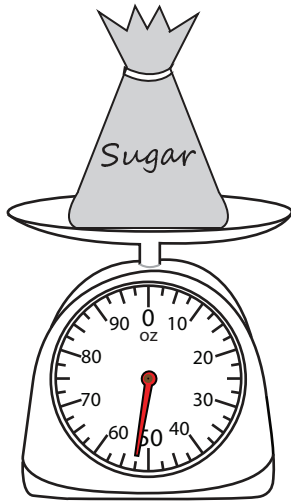
_____ oz

Measuring Weight - Customary Units

DS2

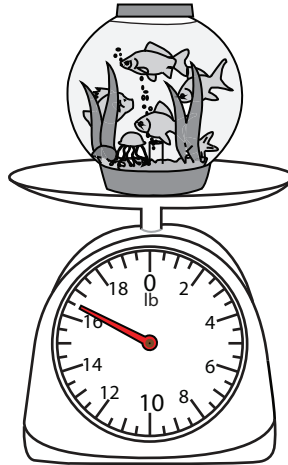
Measure the weight of each object.

1)



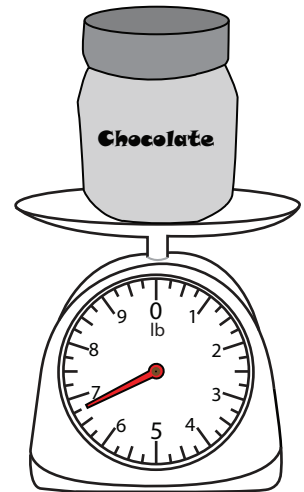
$52\frac{1}{2}$

2)



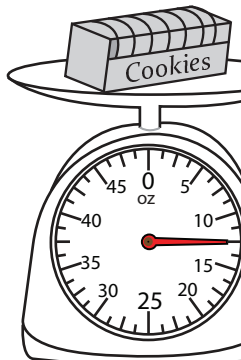
$2\frac{1}{4}$

3)



$6\frac{3}{4}$ lb

4)



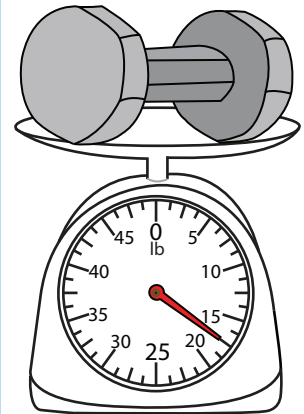
$12\frac{1}{2}$ oz

Gain complete access to the largest collection of worksheets in all subjects!

Members, please log in to download this worksheet.

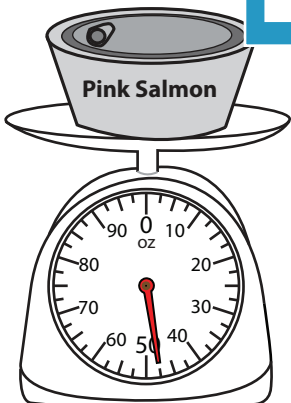
Not a member? Please sign up to gain complete access.

www.mathworksheets4kids.com

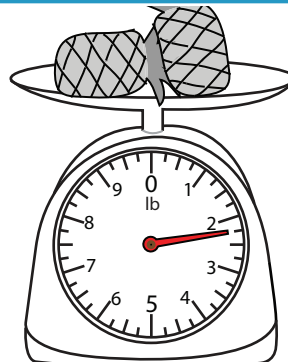


$17\frac{1}{2}$ lb

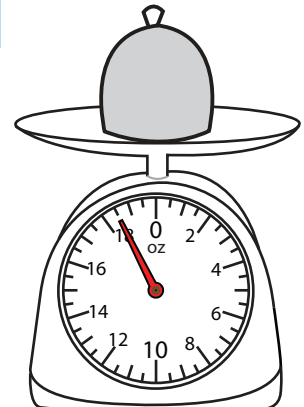
7)



$47\frac{1}{2}$ oz



$2\frac{1}{4}$ lb



$18\frac{1}{2}$ oz