

Subtraction - Decode the Riddle

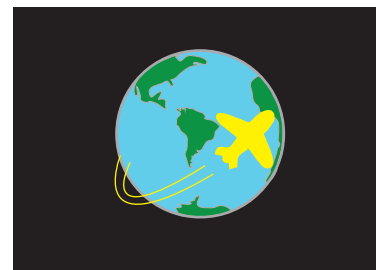
2-digit & 1-digit: S3

Subtract and map the answer to each letter. Decode the riddle.

$$\begin{array}{r} \text{M)} \quad 93 \\ - \quad 7 \\ \hline \end{array}$$

$$\begin{array}{r} \text{T)} \quad 37 \\ - \quad 9 \\ \hline \end{array}$$

$$\begin{array}{r} \text{A)} \quad 20 \\ - \quad 1 \\ \hline \end{array}$$



$$\begin{array}{r} \text{T)} \quad 29 \\ - \quad 1 \\ \hline \end{array}$$

$$\begin{array}{r} \text{S)} \quad 58 \\ - \quad 4 \\ \hline \end{array}$$

$$\begin{array}{r} \text{S)} \quad 60 \\ - \quad 6 \\ \hline \end{array}$$

$$\begin{array}{r} \text{A)} \quad 28 \\ - \quad 9 \\ \hline \end{array}$$

$$\begin{array}{r} \text{A)} \quad 23 \\ - \quad 4 \\ \hline \end{array}$$

$$\begin{array}{r} \text{P)} \quad 67 \\ - \quad 7 \\ \hline \end{array}$$

PREVIEW

Gain complete access to the largest collection of worksheets in all subjects!

Members, please log in to download this worksheet.

Not a member? Please sign up to gain complete access.

www.mathworksheets4kids.com

What can travel around the world?

<u> </u>	<u> </u>	<u> </u>	<u> </u>	<u> </u>	<u> </u>
19	54	28	19	86	60